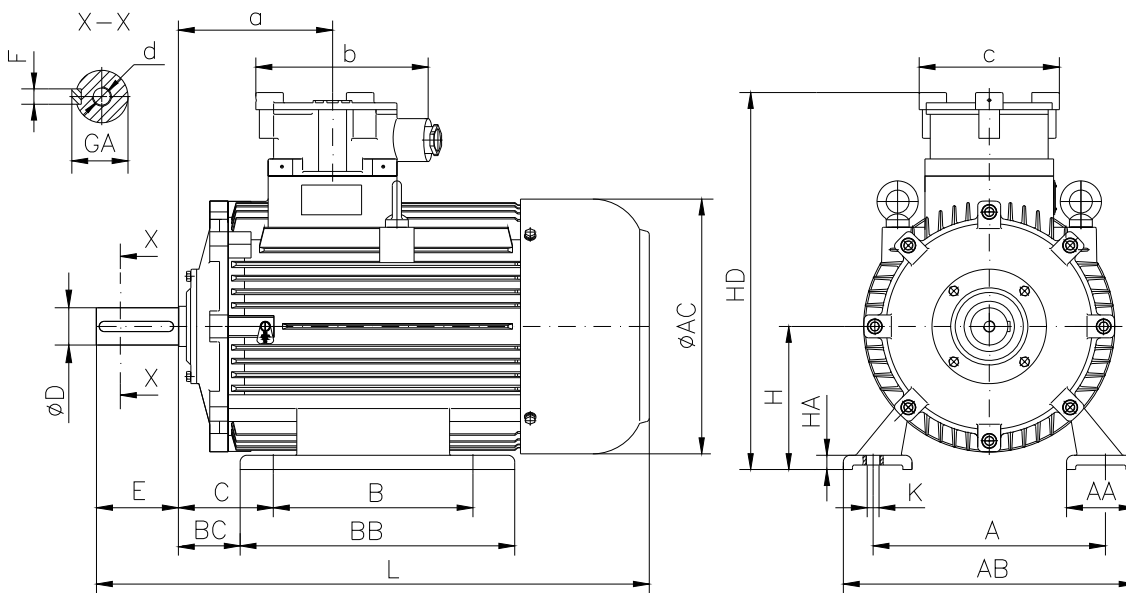


DATA SHEET

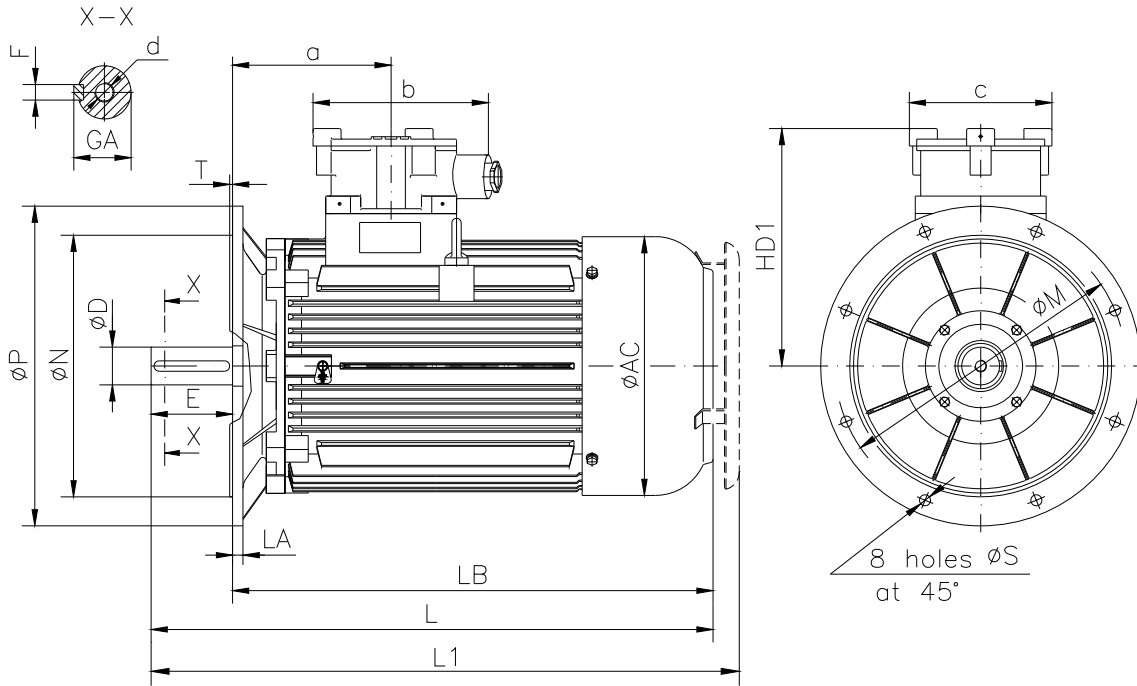
- Type.....ASA 355M-2
- Reference standard..... IEC 60034-1
EN 60079-0
EN 60079-1
EN 60079-7
- Rated output..... 250 kW
- Rated stator voltage.....400V
- Stator connection..... Δ
- Stator current at 100% load431 [A]
- Number of poles.....2
- Rated speed/Rated frequency.....2980 rev/min/50Hz
- Efficiency at 100% load.....95.1%
- Power factor at 100% load.....0.88
- Break-down torque.....2.8 x Mn
- Locked rotor torque.....2.2x Mn
- Locked rotor current.....6.3 x In
- J motor3.425 kgm²
- Insulation class.....F
- Direction of rotation.....REVERSIBLE
- Protection degree.....≥IP55
- Mounting.....IM
- Cooling method.....IC 411
- Max. ambient temperature.....40°C
- Altitude.....1000m
- Bearing type.....6319 drive end
6319 non drive end
- Lubrication..... regreasable bearings with UM 185 Li 3,
Shell Alvania R3, SKF LGTH3 or similar
- Relubricated interval4200[hrs] DE and NDE
- Corrected interval..... 2000 [hrs] DE and NDE
- Grease quantity45g/bearing DE and NDE
- Weight.....1495 Kg
- Outline drawing.....Page 2
- Vibration level :.....A (acc.IEC 60034-14)
- Noise levelacc.IEC 60034-9
- Cable entries.....2 xM63x1.5
- Minimum and maximum admissible supply cable diameter..... 29-44mm
- Climate executionN

**The overall and mounting dimensions
IM 1001**



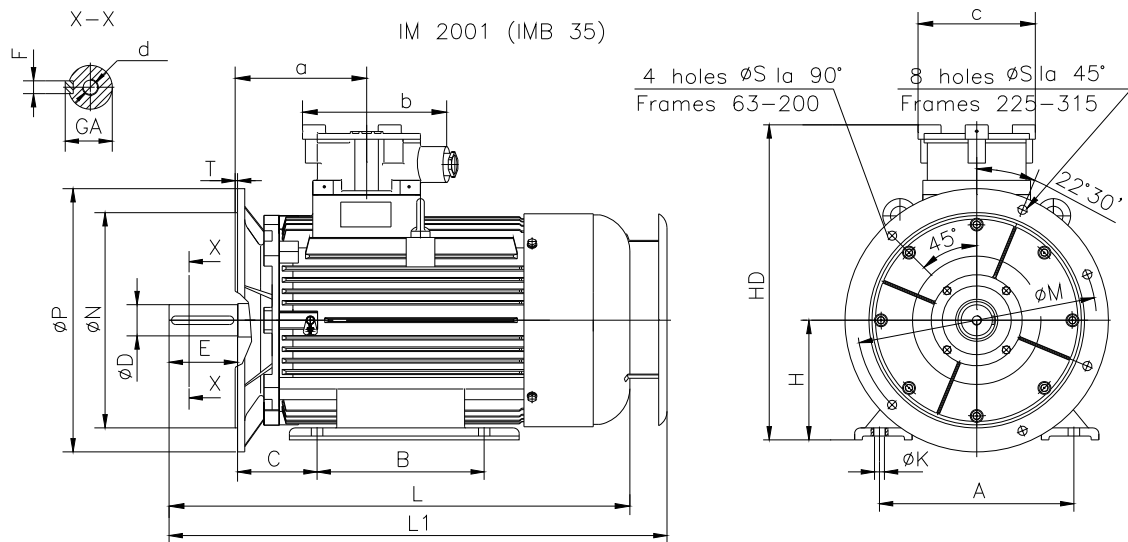
Frame size	Dimensions (mm)																				
	Foot mounting										Shaft extension					HD	AC	L	a	b	c
A	B	C	H _{0.5}	K	AA	AB	BB	BC	HA	D	E	F	GA	d							
355 M-2	610	560	254	355	28	110	714	695	177	32	70m6	140	20	74.5	M20	960	705	1380	320	460	355

**The overall and mounting dimensions
IM 3001; IM 3011**



Frame size	Dimensions (mm)																		
	Flange mounting (B5)					Shaft extension					HD1	AC	LA	LB	L	L1	a	b	c
N	M	P	S	T	D	E	F	GA	d										
355 M-2	680j6	740	800	24	6	70m6	140	20h9	74.5	M20	605	705	35	1230	1380	1480	320	460	355

**The overall and mounting dimensions
IM 2001**



Frame size	Dimensions (mm)																				
	Foot mounting					Flange mounting					Shaft extension					HD	L	L1	a	b	c
355 M-2	A	B	C	H _{0.5}	K	N	M	P	S	T	D	E	F	GA	d						
	610	560	254	355	28	680j6	740	800	24	6	70m6	140	20h9	74.5	M20	960	1380	1480	320	460	355