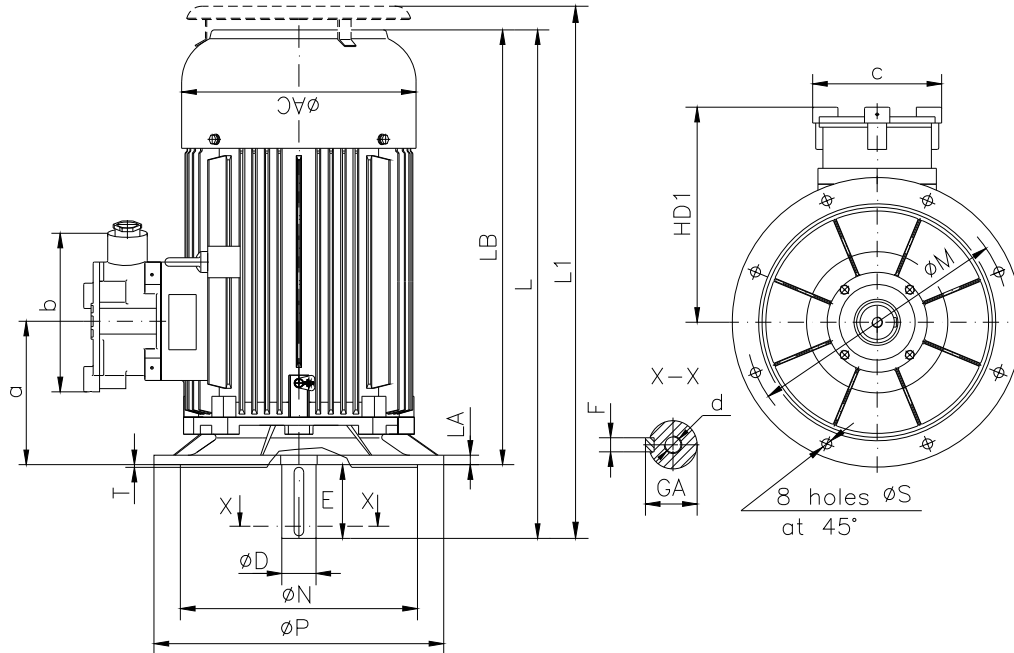


DATA SHEET

○ Type.....	ASA 315MX-4
○ Reference standard.....	IEC 60034-1 EN 60079-0 EN 60079-1 EN 60079-7
○ Rated output.....	132 kW
○ Rated stator voltage.....	440 V
○ Rated frequency.....	60 Hz
○ Stator current at 100% load.....	204 A
○ Number of poles.....	4
○ Rated speed.....	1776 rev/min
○ Rated duty	S1(continuous)
○ Efficiency at 100% load.....	94.54%
○ Power factor at 100% load.....	0.9
○ Break-down torque.....	2.3 x Mn
○ Locked rotor torque.....	2.3 x Mn
○ Locked rotor current.....	7 x In
○ Rotor inertia.....	3.30966 kgm ²
○ Insulation class.....	F/B
○ Direction of rotation.....	Both(CW&CCW)
○ Protection degree.....	IP56
○ Mounting.....	IM V1
○ Cooling method.....	IC 411
○ Max. ambient temperature.....	+50°C
○ Altitude.....	1000m
○ Bearing type.....	6319 drive end 6319 non drive end
○ Lubrication.....	regreasable bearings with UNIREX N2, Shell Alvania R3, SKF LGTH3 or similar
○ Relubricated interval	8700 hrs DE&NDE
○ Corrected interval.....	3000 hrs DE&NDE
○ Grease quantity	45g/bearing DE&NDE
○ Thermal winding protection.....	3xPTC
○ Space heater.....	1x100Wx230V
○ Outline drawing.....	Page 2
○ Vibration level :.....	A (acc.IEC 60034-14)
○ Noise level	acc.IEC 60034-9
○ Cable entries.....	2xM63x1.5
○ Additional cable entries.....	2xM20x1.5
○ Climate execution	T
○ System painting.....	C5M
○ Preliminary values	Calculation

**The overall and mounting dimensions
IM 3011**



Frame size	Dimensions (mm)																		
	Flange mounting (B5)					Shaft extension					HD1	AC	LA	LB	L	L1	a	b	c
N	M	P	S	T	D	E	F	GA	d										
315 MX-4	550j6	600	660	24	6	80m6	170	22h9	85	M20	565	620	25	1185	1360	1460	320	460	355