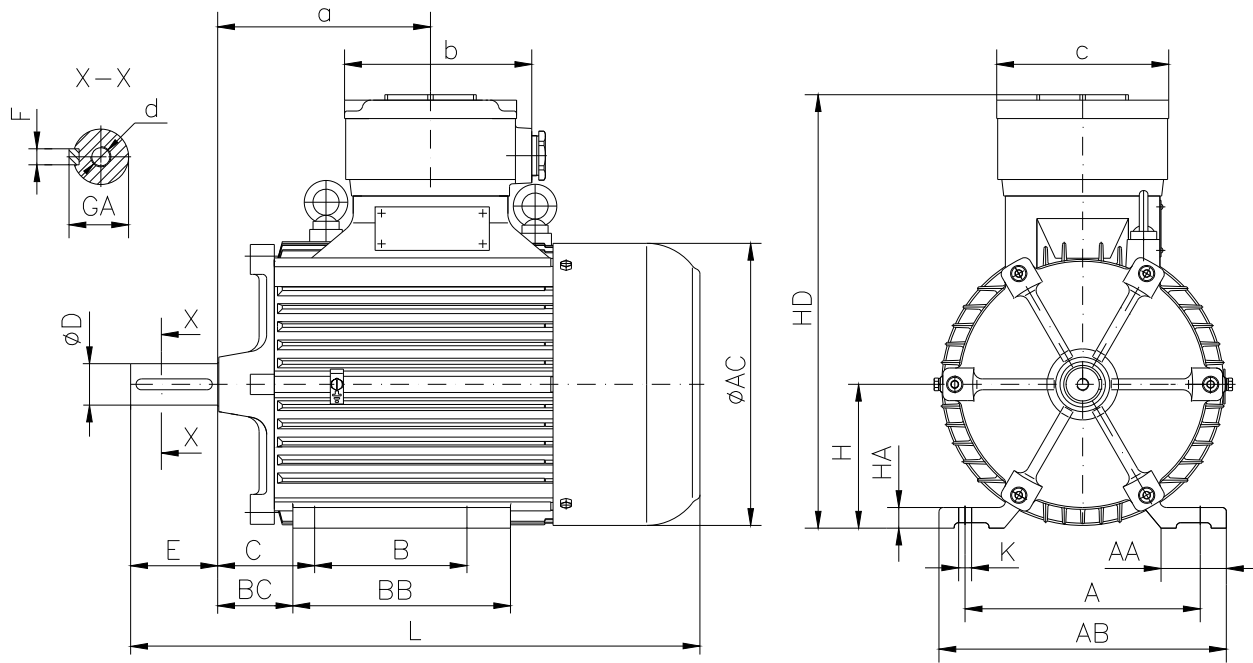


**DATA SHEET**

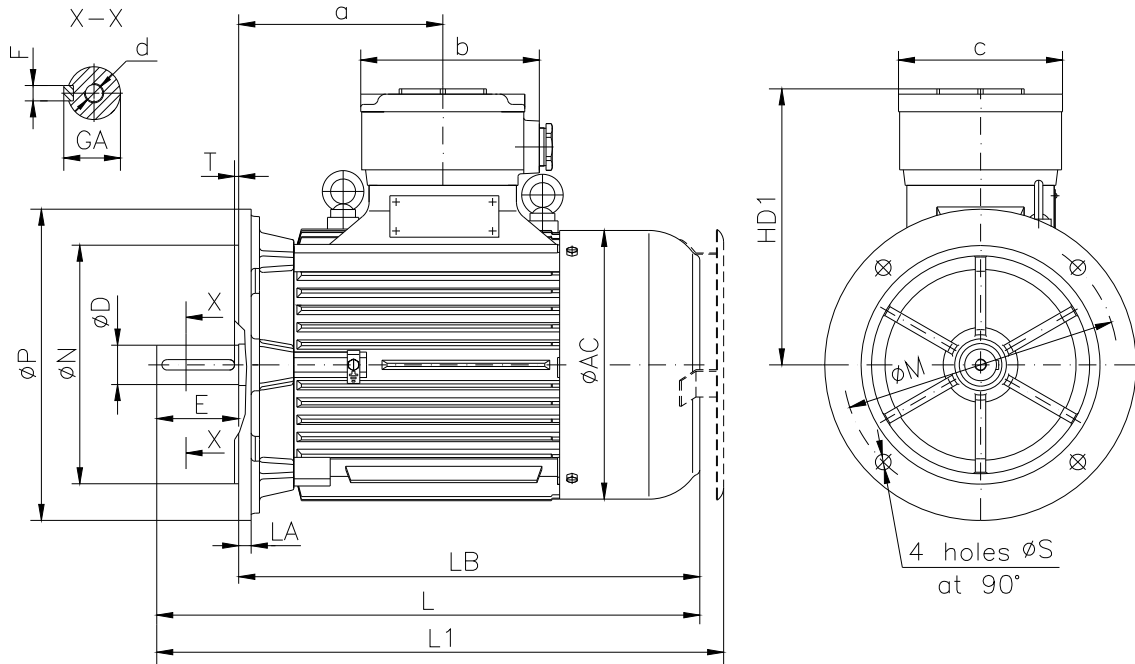
- Type.....ASA 132M-8
- Reference standard.....IEC 60034-1  
EN 60079-0  
EN 60079-1  
EN 60079-7
- Rated output.....3 kW
- Rated stator voltage.....400V
- Stator current at 100% load.....7.23[A]
- Number of poles.....8
- Rated speed.....712 rev/min
- Rated frequency.....50Hz
- Efficiency at 100% load.....82%
- Power factor at 100% load.....0.73
- Break-down torque.....1.84 x Mn
- Locked rotor torque.....1.8 x Mn
- Locked rotor current.....5.84 x In
- Rotor inertia.....0.055686 kgm<sup>2</sup>
- Insulation class.....F
- Direction of rotation.....Both(CW&CCW)
- Protection degree.....≥IP55
- Mounting.....IM
- Cooling method.....IC 411
- Max. ambient temperature .....+ 40°C
- Altitude.....1000m
- Bearing type.....6308 2Z drive end  
6308 2Z non drive end
- Weight.....110 Kg
- Outline drawing.....Page 2
- Vibration level :.....A (acc.IEC 60034-14 )
- Noise level .....acc.IEC 60034-9
- Cable entries.....2xM32x1.5
- Climate execution .....N

**The overall and mounting dimensions  
IM 1001**



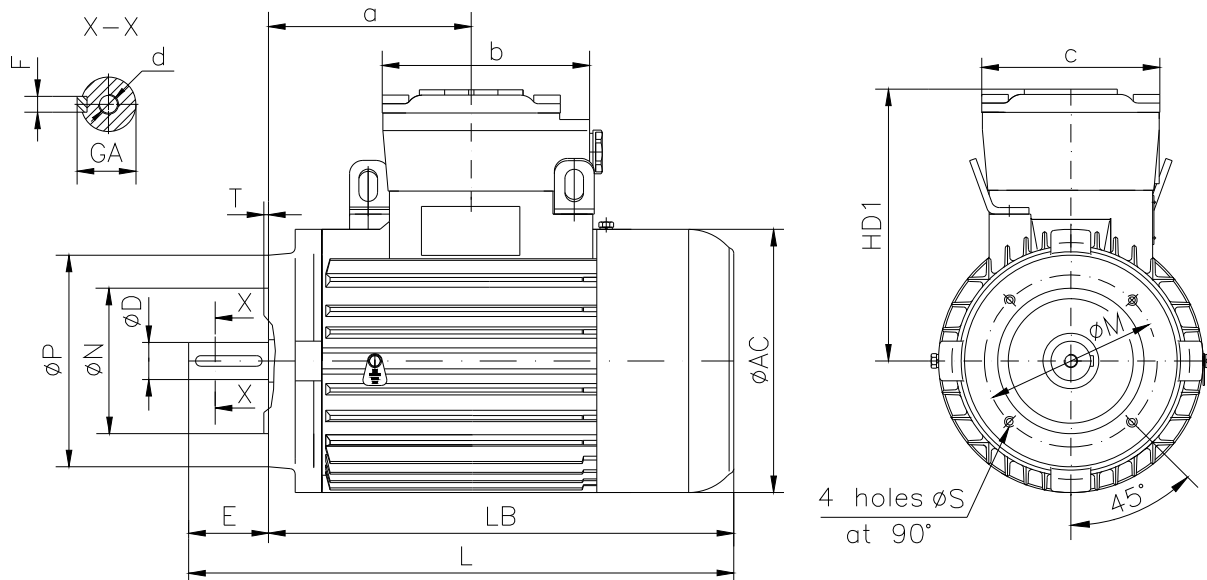
Frame size	Dimensions (mm)																				
	Foot mounting										Shaft extension						HD	AC	L	a	b
132 M-8	A	B	C	H <sub>0.5</sub>	K	AA	AB	BB	BC	HA	D	E	F	GA	d						
	216	178	89	132	12	60	264	250	69	19	38k6	80	10h9	41	M12	400	263	570	225	175	160

**The overall and mounting dimensions  
IM 3001; IM 3011**



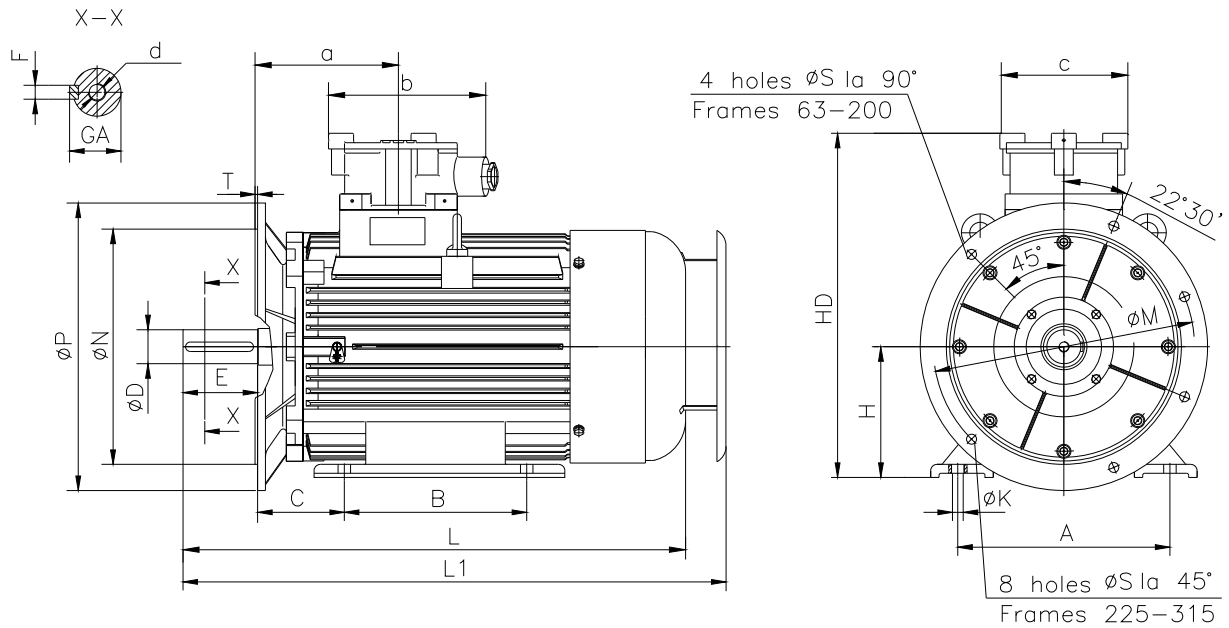
Frame size	Dimensions (mm)																		
	Flange mounting (B5)					Shaft extension					HD1	AC	LA	LB	L	L1	a	b	c
132 M-8	N	M	P	S	T	D	E	F	GA	d	HD1	AC	LA	LB	L	L1	a	b	c
	230j6	265	300	14.5	4	38k6	80	10h9	41	M12	268	263	12	490	570	591	225	175	160

**The overall and mounting dimensions  
IM 3601**



Frame size	Flange	Dimensions (mm)													
		Flange mounting (B14)					Shaft extension		HD1	AC	LB	L	a	b	c
		N	M	P	S	T	D	E							
132 M-8	F165	130j6	165	200	M10	3.5	38k6	80	268	263	490	570	225	175	160
	F215	180j6	215	250	M12	4									

**The overall and mounting dimensions  
IM 2001**



Frame size	Dimensions (mm)																				
	Foot mounting					Flange mounting					Shaft extension					HD	L	L1	a	b	c
132 M-8	A	B	C	H <sub>0.5</sub>	K	N	M	P	S	T	D	E	F	GA	d						
	216	178	89	132	12	230j6	265	300	14.5	4	38k6	80	10h9	41	M12	400	570	591	225	175	160